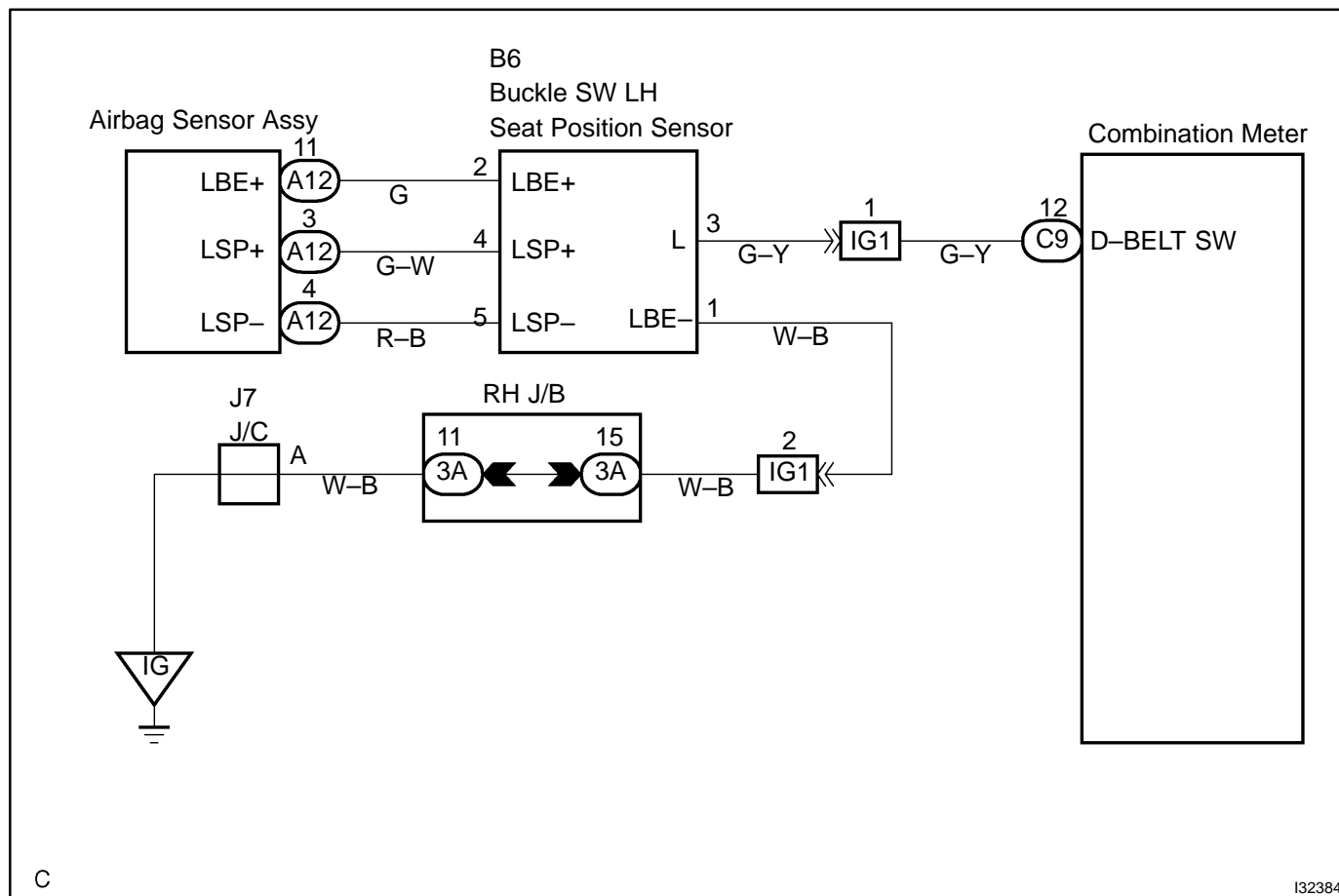


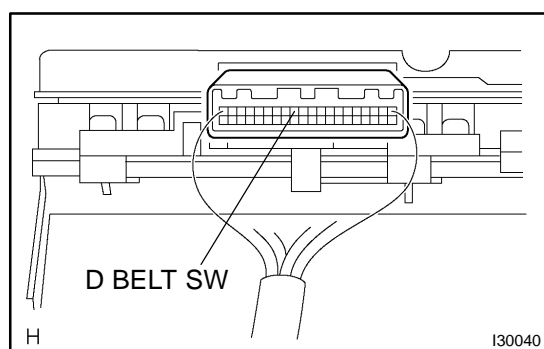
SEAT BELT WARNING LAMP FOR DRIVER'S SEAT DOES NOT OPERATE

WIRING DIAGRAM



INSPECTION PROCEDURE

1 CHECK COMBINATION METER ASSY



- Ground terminal C9-12 on the combination meter side.
- Check that the warning lightlights up.

OK: Warning light lights up.

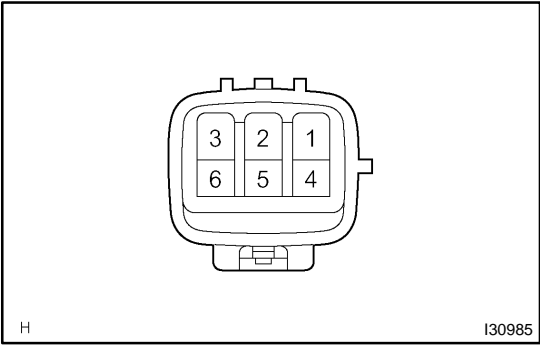
NG

CHECK AND REPLACE COMBINATION METER ASSY

OK

2

INSPECT FRONT SEAT INNER BELT ASSY LH



- (a) Disconnect the front seat inner belt assy.
- (b) Check continuity front seat inner belt assy.

Belt condition	Terminal	Specified condition
Belt unfastend	1 – 2	Continuity
Belt fastend	1 – 2	No continuity

NG

REPLACE FRONT SEAT INNER BELT ASSY LH

OK

REPAIR OR REPLACE HARNESS OR CONNECTOR